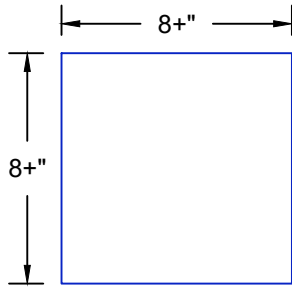
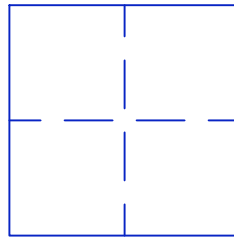


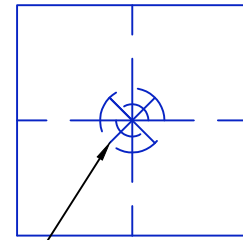
STEP 1:  
CUT A SQUARE PATCH OF  
PRETAK 8" WIDER THAN THE  
WIDTH OF THE PENETRATION



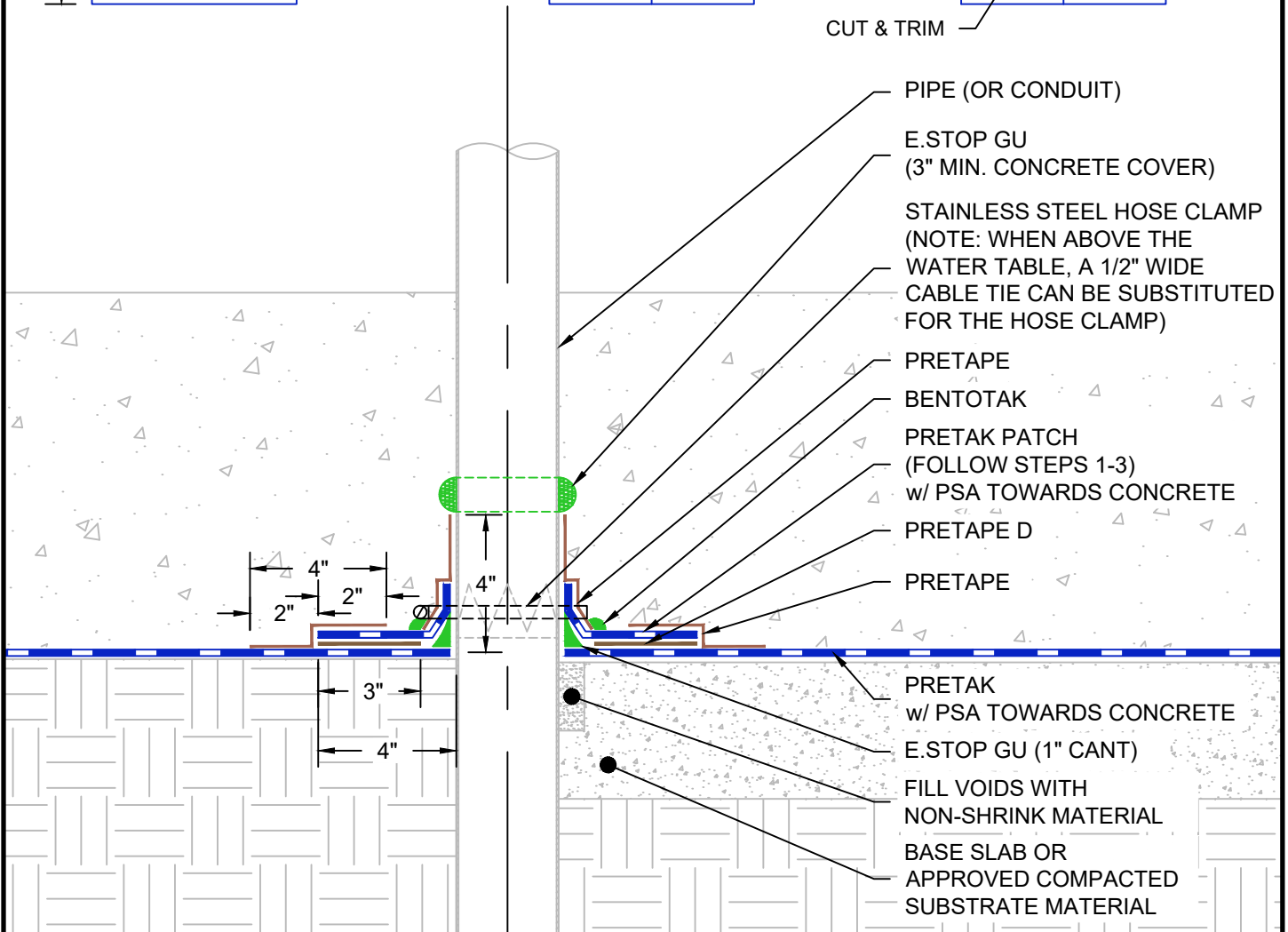
STEP 2:  
FIND THE CENTER OF THE  
SQUARE BY FOLDING IT  
INTO QUARTERS



STEP 3:  
STAR-CUT CENTER OF  
SQUARE TO THE WIDTH  
OF THE PENETRATION  
(TRIM FLANGES TO 2" MAX.  
LENGTH)



CUT & TRIM



PIPE (OR CONDUIT)

E.STOP GU  
(3" MIN. CONCRETE COVER)

STAINLESS STEEL HOSE CLAMP  
(NOTE: WHEN ABOVE THE  
WATER TABLE, A 1/2" WIDE  
CABLE TIE CAN BE SUBSTITUTED  
FOR THE HOSE CLAMP)

PRETAP

BENTOTAK

PRETAK PATCH  
(FOLLOW STEPS 1-3)

w/ PSA TOWARDS CONCRETE

PRETAP D

PRETAP

PRETAK  
w/ PSA TOWARDS CONCRETE

E.STOP GU (1" CANT)

FILL VOIDS WITH  
NON-SHRINK MATERIAL

BASE SLAB OR  
APPROVED COMPACTED  
SUBSTRATE MATERIAL

#### NOTES:

- 1) TIGHTEN HOSE CLAMP AS TIGHT AS POSSIBLE WITHOUT DAMAGING THE MEMBRANE.
- 2) SPACE PENETRATIONS A MINIMUM OF 6" FROM SLAB EDGE, CORNERS, WALLS, OR OTHER PENETRATIONS.

### UNDERSLAB PENETRATION - PIPE

	SYSTEM NAME	DRAWING NUMBER	
	PRETAK	51.120.1	
	DRAFTER	DATE	
	RJT	10/18/2023	

AS A SUPPLIER OF FINISHED RPRODUCTS ONLY, EPRO SERVICES, INC. DOES NOT ASSUME RESPONSIBILITY FOR ERRORS IN DESIGN, ENGINEERING OR DIMENSIONS. THE PROJECT TEAM MUST VERIFY ALL DIMENSIONS AND SUITABILITY OF DETAILS. THE PRODUCTS LISTED ARE TRADEMARKS OF EPRO SERVICES, INC.

NTS

PAGE 1 OF 1