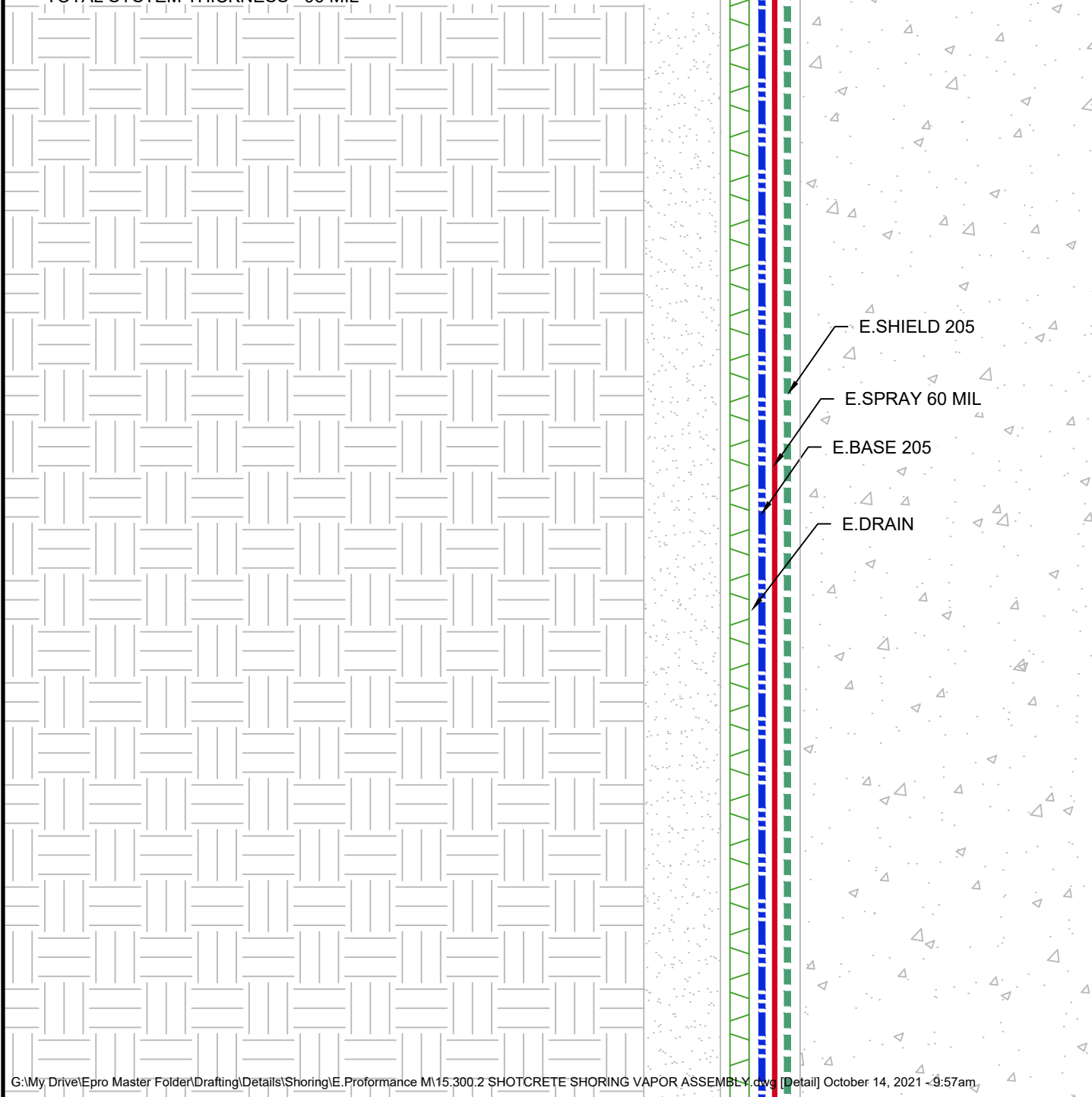




E.PROFORMANCE M SHOTCRETE SHORING VAPOR ASSEMBLY

w/E.SHIELD 205 - GEOCOMPOSITE SHEET - 18 MIL
w/E.SPRAY - POLYMER MODIFIED ASPHALT - 60 MIL
w/E.BASE 205 - GEOCOMPOSITE BASE CLOSURE - 18 MIL
TOTAL SYSTEM THICKNESS - 96 MIL



G:\My Drive\Epro Master Folder\Drafting\Details\Shoring\E.Proformance M\15.300.2 SHOTCRETE SHORING VAPOR ASSEMBLY.dwg [Detail] October 14, 2021 -9:57am

SHOTCRETE SHORING VAPOR ASSEMBLY

	SYSTEM NAME	DRAWING NUMBER	
	E.PROFORMANCE M	15.300.2	
	DRAFTER	DATE	
	RJT	10/14/2021	

AS A SUPPLIER OF FINISHED RPRODUCTS ONLY, EPRO SERVICES, INC. DOES NOT ASSUME RESPONSIBILITY FOR ERRORS IN DESIGN, ENGINEERING OR DIMENSIONS. THE PROJECT TEAM MUST VERIFY ALL DIMENSIONS AND SUITABILITY OF DETAILS. THE PRODUCTS LISTED ARE TRADEMARKS OF EPRO SERVICES, INC.

NTS

PAGE 1 OF 1