



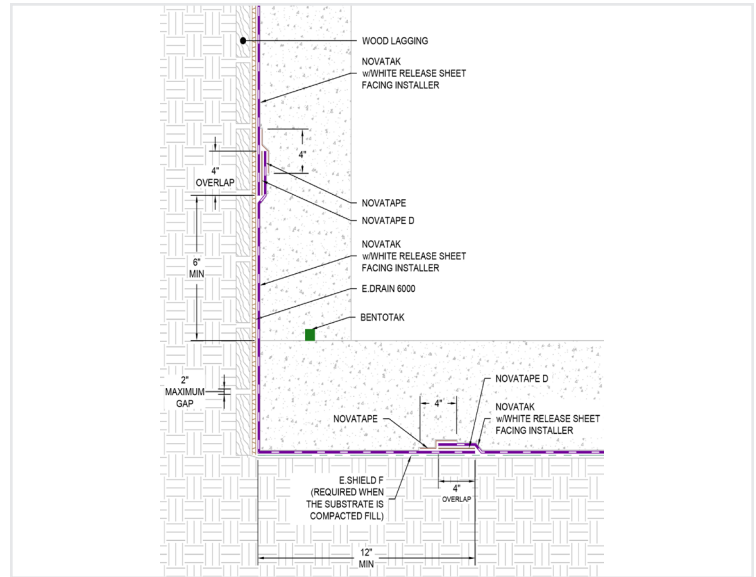
## Product Description

**Basic Use:** NovaTak 60 mil pre-applied sheet waterproofing is specially formulated to create a chemical reaction that ionically fuses the butyl rubber membrane to freshly placed concrete, thus creating an inseparable integration between NovaTak and the concrete substrate. NovaTak is a highly durable, non-vulcanized butyl rubber membrane that is very easy to install due to its flexibility and ability to conform to all types of below grade conditions. NovaTak utilizes butyl adhesive tapes that create butyl-to-butyl bonded seams with a tenacious bond that rivals heat welding and makes system repairs quick and easy.

**Composition:** NovaTak (60 mil/1.5 mm) sheet consists of two layers of specially formulated butyl rubber encapsulating a central reinforcement film of oriented polypropylene (OPP) and protected with a white release liner.

## Benefits

- NovaTak fuses to concrete with an ionic chemical reaction that is many times stronger than traditional pre-applied sheet membranes and does so without the use of any adhesive.
- The flexibility of NovaTak provides the installer with a membrane that is easy to apply, especially to substrates that are irregular or where multiple penetrations may exist.
- NovaTak stays flexible in extreme cold and high temperatures, making it easy to apply.
- Prevents lateral water migration by ionically fusing to poured-in-place concrete and shotcrete.
- NovaTak will not pre-activate like bentonite, it can withstand long term UV exposure without warping or deforming like HDPE, and it is unaffected by rain, snow, or ice.
- Direct UV, precipitation, pooling water, and heat do not substantially adversely affect the installed system.
- Proven and effective, NovaTak has an over 20-year successful track record of performance on projects around the world.



## Limitations

- Not ideal for sites with soil or groundwater contamination.
- Should not be used for post-applied waterproofing applications.

## Technical Data

Properties: See physical properties table

Coverages: One roll covers 118 square feet (11 m<sup>2</sup>), not including overlaps or waste.

Specification Writer: Contact EPRO before writing specifications on this product. Additional test information available upon request.

## Installation

**Preparation:** Please refer to manufacturer's specifications for substrate requirements. Rolls should be inspected for cosmetic damage prior to application.

**Application:** Please refer to manufacturer's installation guidelines. Installation is efficient and reliable with butyl-to-butyl adhesive bonds using NovaTape single-sided tape or NovaTape D double-sided tape at manufacturer marked side laps, end laps, and patches. NovaTak delivers superior performance in harsh conditions without the need for specialized equipment, heat, or power.

Extra seam protection is required for hydrostatic conditions and/or when structural shotcrete is utilized. NovaTak should be reinforced by using NovaTape D within the seam overlap and NovaTape centered on top of the completed seam overlap.

## System Components

Detailing & Seaming: NovaTape, NovaTape D

Sealant: NovaSeal 5000, XT1

Waterstop: BentoTak, e.stop gu

**Availability and Packaging**

Contact EPRO sales representative for local distributors or authorized applicators ([www.eproinc.com](http://www.eproinc.com)).

Roll Size: 60 mil, 3'-7" x 32'-9", 57.5 lbs

**Warranty**

EPRO provides a wide range of warranty options for EPRO systems. For a project to be eligible for any warranty option beyond a 1-year material warranty, an EPRO Authorized Applicator must be used and the project must be registered and approved by EPRO prior to the commencement of any product application.

Warranty options available for this system include:

- Material warranty
- EPRO Labor and Material Warranty
- E.Assurance No-Dollar-Limit Warranty

For information relating to EPRO's E.Assurance warranty program, contact EPRO. All E.Assurance no-dollar-limit labor and material warranties are approved on a project by project basis. E.Assurance warranties are available for deck applications when E.Series systems are used on the below-grade envelope.

**Specifications, Drawings, and Technical Assistance**

The most current specifications and drawings can be found on [www.eproinc.com](http://www.eproinc.com). For project specific details contact EPRO directly, or the local EPRO representative.

Site conditions, performance goals, and budget determine which system is more appropriate for a given project. For more information regarding product performance, testing, plan review, or general technical assistance, please contact EPRO.

This product was formerly known as Novatak by Kingfield Construction Products, Inc.

**Physical Property**

**Test Method**

**Value**

Film Material.....		Butyl Rubber
Color .....		Black
Resistance to Hydrostatic Head .....	ASTM D 5385.....	231 ft (71 m)
Resistance to Lateral Water Migration.....	ASTM D 5385.....	Pass at 231 ft (71 m) of head pressure
Low Temperature Flexibility.....	ASTM D 1970.....	Unaffected at -20°F
Elongation at Break MD .....	ASTM D 1970 / D 1970M-15 .....	0.83 inches at break
Maximum Load MD.....	ASTM D 1970.....	49.3 lbf/in
Elongation at Break XMD.....	ASTM D 1970.....	94.8 lbf/in
Tensile Strength, Film .....	ASTM D 412.....	1538 psi (10.6 MPa)
Puncture Resistance .....	ASTM E 154 .....	151 lbs (672 N)
Crack Cycling at -9.4°F, 100 cycles .....	ASTM C 836.....	Pass
Puncture Resistance .....	ASTM D 4068.....	Pass
Peel Adhesion to Concrete .....	ASTM D 903.....	23 lbs/in. (4028 N/m)
Lap Peel Adhesion at 72°F.....	ASTM D 1876.....	Pass
Lap Peel Adhesion at 40°F.....	ASTM D 1876.....	Pass
Permeance to Water Vapor Transmission .....	ASTM D 96, method B.....	0.05 perms (US)

Dimensions: 3'-7" x 32'-9" (1.1 x 10 m)

Weight: 57.6 pounds (26 kg)