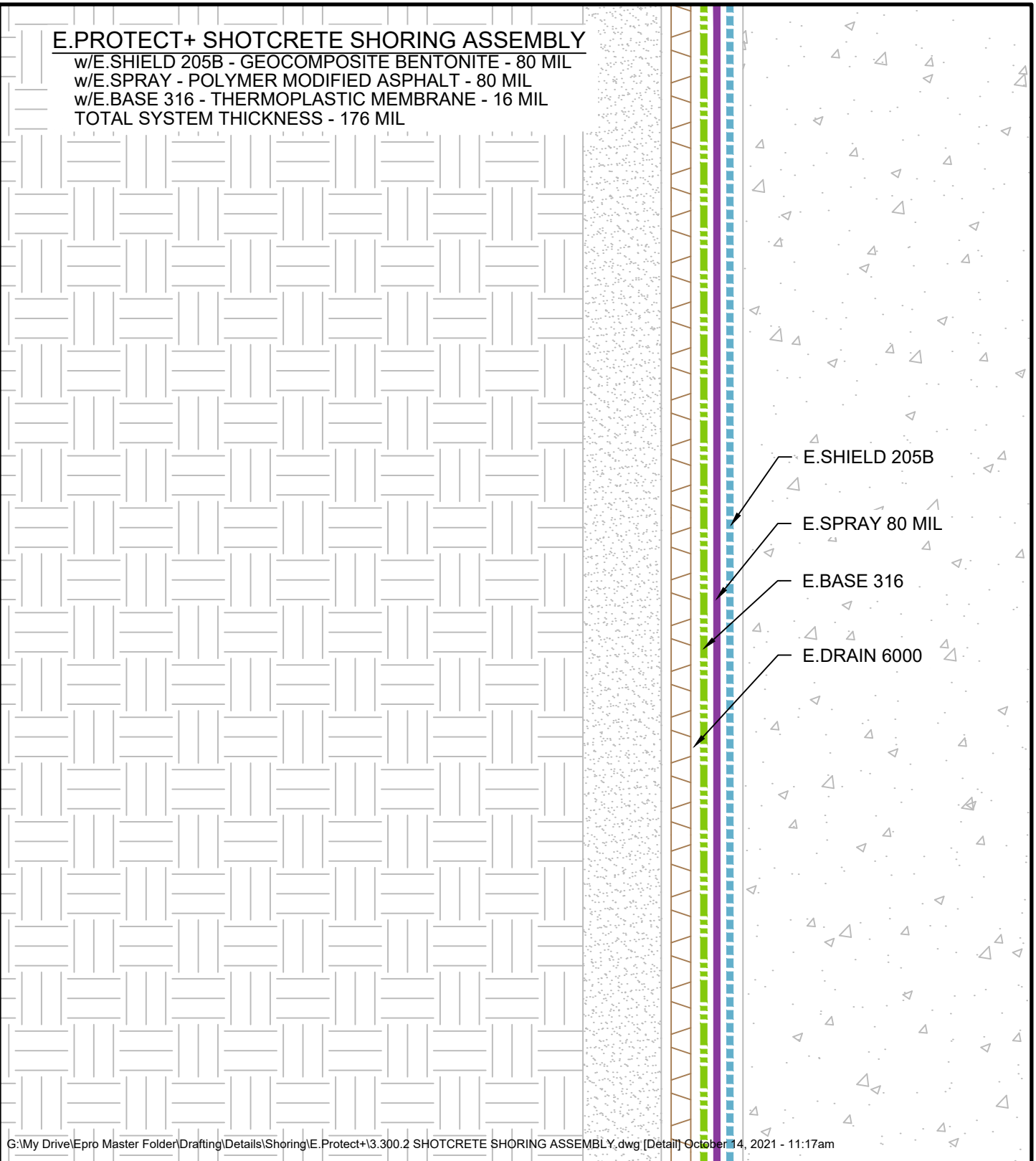


E.PROTECT+ SHOTCRETE SHORING ASSEMBLY

w/E.SHIELD 205B - GEOCOMPOSITE BENTONITE - 80 MIL
w/E.SPRAY - POLYMER MODIFIED ASPHALT - 80 MIL
w/E.BASE 316 - THERMOPLASTIC MEMBRANE - 16 MIL
TOTAL SYSTEM THICKNESS - 176 MIL



G:\My Drive\epro Master Folder\Drafting\Details\Shoring\E.Protect+\3.300.2 SHOTCRETE SHORING ASSEMBLY.dwg [Detail] October 14, 2021 - 11:17am

SHOTCRETE SHORING ASSEMBLY



SYSTEM NAME

E.PROTECT+

DRAFTER

RJT

DRAWING NUMBER

3.300.2

DATE

10/14/2021



AS A SUPPLIER OF FINISHED RPRODUCTS ONLY, EPRO SERVICES, INC. DOES NOT ASSUME RESPONSIBILITY FOR ERRORS IN DESIGN, ENGINEERING OR DIMENSIONS. THE PROJECT TEAM MUST VERIFY ALL DIMENSIONS AND SUITABILITY OF DETAILS. THE PRODUCTS LISTED ARE TRADEMARKS OF EPRO SERVICES, INC.

NTS

PAGE 1 OF 1