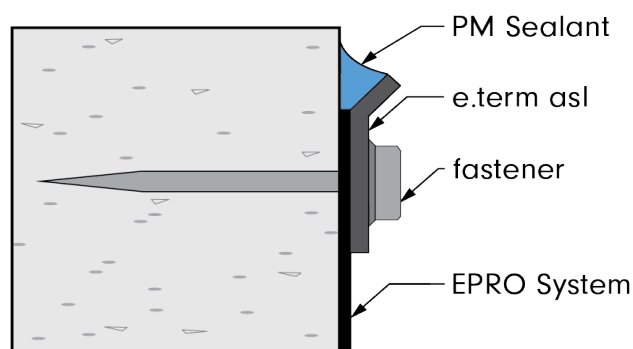




e.term asl



Product Description

Basic Use: e.term asl is a 75 mil (1.9 mm) thick termination bar with an angled sealant ledge made from 6063-T6 extruded aluminum with 1/4" x 3/8" slotted holes 6-inches (150 mm) on-center. It provides an excellent solution for top terminations with below-grade waterproofing membranes and vapor barrier systems. e.term asl protects the waterproofing top edge and will secure drain panels and protection boards.

Composition: 75 mil (1.9 mm) thick, 1-inch wide, extruded 6063-T6 aluminum.

Benefits

- Performs as a termination bar.
- Unique design prevents delamination of the waterproofing or vapor barrier membrane system.
- Angled sealant edge secures sealant at termination edge.
- Prevents top edge damage of the covered membrane.

Limitations

- A sealant bead or reinforcement detail is required on the top edge of the termination bar

Technical Data

Coverage: Bar: 10 linear feet (3.1 meters)
Tube: 50 bars, 500 linear feet (152.4 meters)

Storage and Handling: Store raised off the floor away from moisture.

Specification Writer: Contact EPRO before writing specifications on this product. EPRO System selection should be reviewed in order to meet project specific site conditions.

Installation

Surface Preparation: All surfaces shall be prepared in accordance to manufacturer's specifications. Substrate shall be smooth and uniform to allow for consistent fastening.

Application: Install e.term asl at the top edge of material or through waterproofing membrane with the angled sealant ledge facing up and fasten every 12-inches (300 mm) on-center with appropriate mechanical or power actuated fasteners using 1.25" (32 mm) galvanized shot pins or nylon-mushroom cap galvanized nails. Seal top edge of term bar and 1/8" (3 mm) beyond fastener head with PM Sealant or e.roll reinforcement detail.

Warranty

Limited Warranty: EPRO Services, Inc. believes to the best of its knowledge that performance tables are accurate and reliable. EPRO warrants this product to be free from defects. EPRO makes no other warranties with respect to this product, express or implied, including without limitation the implied warranties of MERCHANTABILITY OR FITNESS FOR PARTICULAR PURPOSE. EPRO's liability shall be limited in all events to supplying sufficient product to retreat the specific areas to which defective product has been applied. EPRO shall have no other liability, including liability for incidental or resultant damages, whether due to breach of warranty or negligence. This warranty may not be modified or extended by representatives of EPRO or its distributors.

Availability and Packaging

Contact EPRO sales representative for local distributors or authorized applicators (www.eproinc.com).

Bar Size: 0.075" x 1" x 10' (1.9 mm x 25 mm x 3.1 m), 1.0 lbs (0.45 kg)
Tube Size: 50 strips, 500 linear feet (152.4 m), 50 lbs (22.7 kg)

Equipment

Fasteners: Galvanized or Stainless-Steel (min. 1.25" | 32 mm)

- Shot pins (mechanical or powder-actuated fastening)
- Nylon-mushroom cap nails (drilled manual fastening)

Sealant:

- PM Sealant - STPE sausage-packaged sealant.
- e.roll - Single-component polymer-modified anionic asphalt emulsion.
- e.poly - Polyester reinforcing fabric.

Technical Services and Information

Complete technical services and information are available by contacting EPRO at 800.882.1896 or www.eproinc.com.